



Sheltie Connection

UTAH SHETLAND SHEEPDOG ASSOCIATION JANUARY 2009

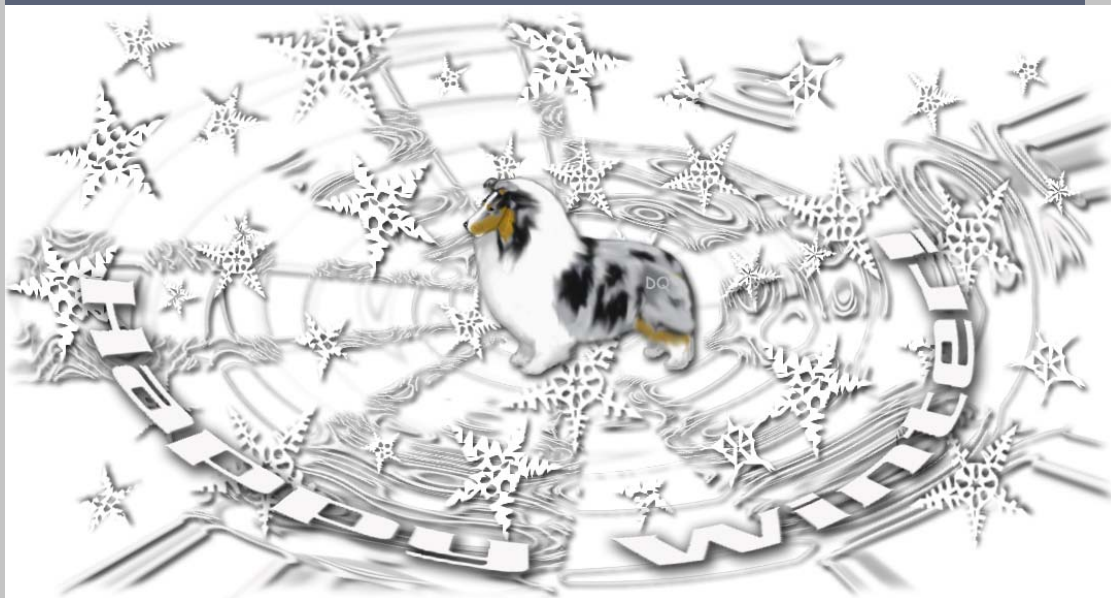
Editor:
 Tricia Harris
 2082 Mountain Vista
 Provo, Utah 84606
 lacewoodshelties@comcast.net
Submission
 Deadline is the
 20th of each month.
 Club Meetings are the 3rd
 Wednesday of each Month.
 Board will meet 1 hour prior
 to the club meeting.

INSIDE THIS ISSUE:

Announcements	2
Member Spotlight	3
Memoriam, Shimmer	5
Memoriam, Hailey	8
Akadia	9
Akadia	10
Liberty	11
Caledon	12
Char Bar	13
Clan Duncan	14
Lacewood	15
Fit of Lips	16
I Have a Question	23
Club Meetings	25
Getting To Know You	26
GSOC	27
Specialty photos	28
Calendar of Events	30

President's Message Jim Newman

Happy New Year to everyone!!!



CLUB MAILING ADDRESS:
 USSA
 Peggy Newman
 USSA Correspondence Secretary
 PO BOX 142, Sandy UT 84091-0142
TO EMAIL THE CURRENT BOARD:
 utahsheltie@yahoo.com

We're on the web!
www.utahsheltie.org

Announcements

USSA WEBSITE
CHECK OUT OUR WEBSITE AT
WWW.UTAHSHELTIE.ORG
YOU CAN DOWNLOAD PAST NEWSLETTERS THERE



Classified Ads:

For Sale:

Vaccines:

Vanguard Plus 5 shots. These vaccines contain NO leptospirosis or corona.

\$5.00 each. Contact Cherie Hyde 801-226-0701 or

cghyde@comcast.net I can bring them to the next club meeting.

I have 15-20 to sell.

Notice

Anyone who has puppies for sale, or is looking for a puppy or older dog, please contact Peggy Newman. You can reach Peggy at (435) 783-4285 or email at utahsheltie@yahoo.com

I would love to have the "Getting to know our members" questionnaire filled out by those who haven't yet. Among you are:: Tammy Blakely, Barbara Ray, Cheryl Sorensen, the Ciampini's, Aulbach's, Cindy Wilkinson, Kendrick's, Polster, Albrecht's, Diane Orr, Jim Melton, Matthews, Cornella's, Parry's, just to name a few. Please don't be shy. We want to hear all about you. If I haven't named you and you haven't done one yet,, please do!!!! thanks so much.

— Shannalee

Happy Birthday
 We want to wish the following members a very happy Birthday

18 Kristen Sittner
 21 Charlie Vann
 25 Tricia Harris



The Club's email address is:
utahsheltie@yahoo.com

*** If we miss your birthday please let us know so that we can add you to our list.

Member Spotlight

- 1.) State your full name: *Christine Weatherston (but I go by Chrissy have done since I was 8 years old)*
- 2.) Kennel Name and how you came up with it: *Windsor Had to have a English name it's named after the royal residents of Windsor Castle which is not far from my home in England.*
- 3.) How did you first become interested in Shelties?: *Back home in England we got a collie my mom tried to pass it off to my dad as an oversized sheltie, dad knew it was a collie. But that's when I fell in love with the breed and wanted one.*
- 4.) Who was your first sheltie and what color was he/she? *"Misty" Weatherston's Mystic Dawn Sable*
- 5.) Do you breed shelties? *Not in along time hopefully in the near future.*
- 6.) Who was/is your mentor, Who do we thank for getting you started? *I would say my mentor on the breed side is Shannalee Michalsky I have learnt so much from her from being ring side helping her and listening and watching. The person I would thank for getting me started especially in performance is Caren Ciampini believe it or not she suggested that I should try obedience first with my dog and that's all it took and the rest is history.*
- 7.) How many dogs do you have? What titles do your dogs have? *we currently have 3 dogs Tyson has ASCA-OTCH, UD, RAE, 8/10 UDX legs, ASCA UD, 4/10 ASCA UDX legs and U-CDX and CGC. Ashley has no title but I did show her in the breed ring and we did get colored ribbons no blues Cody has his RN and RA title in rally Obedience and did show one time in the breed ring.*



Tyson and Ashley

- 8.) Who is your favorite dog (that you own)? *That's tough I have two great dogs that I just love in Tyson and Cody but I would lean more to Cody he is just a super fun dog to train and live with great personality.*



Cody

9.) Who is your favorite dog not owned by you (living or passed)? *I would say the late Ch. Royl Marchwind Flash Gordon "Gordon" owned by Marie Miles I just loved that dog, great personality was a fun dog to be around.*

10.) Who do you admire? *I have three people the first is Shannalee Michalsky I love watching her in the ring with her dogs. I also admire Marie Miles without Marie I would not have gotten Tyson and had the most amazing obedience/rally career. The third person is my trainer Barbara Honeycutt of Willowcreek Dog Training Center in Salt Lake City without her my obedience and rally career would be nothing.*

11.) What is your favorite part of showing dogs? *For obedience and rally it showing off our hard work of training whether we win or lose we gave our best effort every time.*

12.) What has been your favorite or most memorable win? *That's easy Tyson getting a 199 in Open B and 198.5 in Utility B at the South Jordan Shows in May 2003 and winning High in Trial and High Combined on the same day. Tyson in July 2006 finishing his ASCA-OTCH. Also being ranked the #4 Sheltie in the Nation for his Advanced Rally Obedience work for 2007.*

13.) Is there a dog that you own now that you are particularly excited about? *I would say Cody, Akadia Wild-fire, he finally got a brain when he turned 3 years old this past June and realized that he could sit with a dumbbell in his mouth and he is now doing his articles and gloves so excited about this little man future in Obedience.*


14.) What goals have you set for yourself in purebred dogs? *My goals are simple get Cody through his obedience and rally titles and hopefully find a show bitch and do more on the confirmation side. Learn more about this amazing breed and hopefully one day produce our first litter of puppies that will carry the Windsor Kennel name.*

15.) Any words of advice for newcomers? *Have fun with your dog whether they are a pet, performance show dog or a confirmation show dog enjoy them we only have them a short while enjoy the ride that they take you on I sure have it will introduce you to so many wonderful people in the breed.*

CH Shalamars Star Stealer
CD, RN, HT, AX, OAJ, AXP, AJP
10/26/97-12/22/08



Shimmer



Not just a brag, not just a stepping stone to a higher title, not just an adjunct to competitive scores; a title is a tribute to the dog that bears it, a way to honor the dog, an ultimate memorial. It will remain in the record and in the memory, for about as long as anything in this world can remain. A title says your dog was intelligent, adaptable, and good natured. It says that your dog loved you enough to do the things that please you, however crazy they may have sometimes seemed. In addition, a title says that you love your dog. That you loved to spend time with her because she was a good dog and that you believed in her enough to give her yet another chance when she failed and in the end your faith was justified. A title proves that your dog inspired you to that special relationship enjoyed by so few; that in a world of disposable creatures, this dog with a title was greatly loved, and loved greatly in return. And when that dear short life is over, the title remains as a memorial of the finest kind, the best you can give to a deserving friend. Volumes of praise in one small set of initials after the name. A title is nothing less than the true love and respect, given and received and recorded permanently.

In Memoriam

CH Shalamars Star Stealer *CD, RN, HT, AX, OAJ, AXP, AJP* *“Shimmer”*

Shimmer was a wonderful happy dog who brought a smile to anyone's face that met her. She was a people dog and the perfect kid dog. Shimmer absolutely loved attention and would start wagging her tail and barking every time she saw you. Shimmer had a huge heart and knew just how to cheer you up when you were down. She was the first Sheltie in Utah to receive the prestigious Champion/Excellent Versatility award from ASSA, she also got High in Trial in Obedience at the Sheltie Specialty. Shimmer worked hard in everything that she did, she was truly an all around dog. She not only showed up all the dogs in conformation and earned her Championship but she also could go out and do Agility, Herding, Obedience and Rally. Shimmer took every new challenge with enthusiasm. What she loved doing most of all was being with my mom (Cindy Wilkinson). She would do anything to please her, they shared a special bond that will last forever. Shimmer was not just a dog she was a friend, a protector, someone to confide in, a warm blanket, and she always managed to make you feel better. Shimmer was greatly loved and will be greatly missed.

We will forever miss her ever present doggy grin, her loving, gentle spirit and her constant readiness for a game, a walk, or a snuggle on the couch. In her 11 years she must have passed out at least a million smiles to a thousand people. We love you Shimmer and you will forever remain in our hearts and in all of the hearts of the people that you touched.

—See you at the rainbow bridge my dear friend.

In Memoriam

Akadia Windabrae Helvetica

"Hailey"



Today, Jan. 2nd, was one of those days that we dog owners all hate to see come. The day when we as owners have to decide what step to take in an old dogs life. There comes a point when they are so gone that we have to make that decision that we all don't want to make. Today was that day for us and "Hailey". Akadia Windabrae Helvetica,, born just short of 15 years ago and made her decent into the spirit world today.

Just 2 days ago,, we had her grand babies born here.

Akadia HellsBells, (Hailey daughter) gave birth to 5 puppies. 4 girls and 1 boy sired by CH. Starfall's The Enchanter CD.

There goes the old adage of "when God closes a door, he also opens a window".

"Hailey" was an incredible little dog. For us,, my husband and I,, she was an important part of our relationship. You see,, when we first started dating,, "Hailey" was just a baby. I would go to my friend's house to take care of her (she was a bottle raised puppy) and Derek would come with me. One time while preparing her food, I was in the

kitchen and I left Derek and her in the living room. I came back with her food and couldn't find Hailey anywhere. Derek sat on the couch not saying a word. I asked him where she was and he didn't say any thing. I then noticed that his hat was off his head and across the room. All of a sudden the hat moved. She was so tiny that his hat completely covered her. We had a good laugh about that one.

"Hailey" always had a remarkable temperament. Very showy and ready for what ever you dealt her. She was an upbeat little spirit right till the end.

There are many wonderful stories and memories associated with her. Derek and I have spent the day recalling them, shedding some tears and feeling so very enriched by that little dog.

In my mind,, I see glasses held high,, smiles on faces and a special toast made to the little brown dog that contributed so much for us. " A toast to "Hailey",, so special, so endearing, and forever in our hearts".
Godspeed little one.

Akadia presents

Lacewood The Star Trooper

Sometimes your just,,,
well,,, Special

"Chip"

THANK YOU Tricia for
this wonderful
BISS CH. Seahaven Chasing Moonbeams ROM
and
BISS CH. Lacewood Bi Starlight
son
Bred and Co-owned by
Tricia Harris, Lacewood

Akadia Shelties presents our blue boys....



"Kohlman"

Akadia Chandelle Steel and Flames

*Ch. Denian Deuce's Are Wild
Ex.*

Twincreeks Akadia Pullin Strings

Pictured at 13 months

*Owned and bred by
Akadia
and
Judy Williamson*



"Deakon"

Akadia Totally Intrepid

*BISS Ch. Aynsworth
Silver Moonlight ROM
Ex*

*Ch. Akadia
Totally Intoxicating*

Pictured at 11 months

*Bred/owned by Akadia
co-owned by
Yvonne Davey*

“Liberty Shetland Sheepdogs”

“A Hunting We Will Go”



I thought the members would like to see the response I got from Danny & Polly. Danny didn't seem to care too much about the deer, but Polly didn't like it at all, but then she seem to settle down.

Caledon



I took Denny Daffron's puppy, Clover to an AKC all breed match when she was 14 weeks old. There were quite a few shelties entered, Clover being the youngest of all. She won Best Of Breed puppy under judge RoseMary Leist (AKC approved judge for shelties) and was 3rd in the puppy herding group, despite the fact that she would only gait on my right side. We have that issue attended to now and she is entered in her first show at the Rose City cluster in January...stay tuned.

Char-Bar



Dec 4th, Thursday at the *Willamette Toy Dog Fanciers*, Ridgefield, WA.

CharBar's Remember My Name "Jovi"

WD/BOW/BOS for a 4 pt major this left him needing 2pts to finish. I thought Oh no, I will end this year needing the 2pts., everyone knows how hard it is to get the last point or two. To my elation on Dec 6th Sat. he was WD/BOW another 4 pt major to finish. all from the BBE class 16 months Old

What is so exciting about this win is, from a litter of Five he is the fourth Champion

in one year and to make his Dam a ROM. Two Champions from her previous litter.

Here is his win picture and a picture I had taken the day before he finished.

Owner: Barbara & Charles Vann

His Brother Andre is working on a little obedience, he will be in the conformation ring next.



FATHER ★ SON

M O V E R



Freddie

Ch. Clan Duncan Black Sea

M O V E R



Bey

Clan Duncan Constantinople, 5.5 mos.

Clan Duncan



danaq@aol.com

Lacewood Shetland Sheepdogs

Introducing
Lacewood Traces of Moonlight "Traci"



Lacewood Jamaican Moonrise "Jamie"

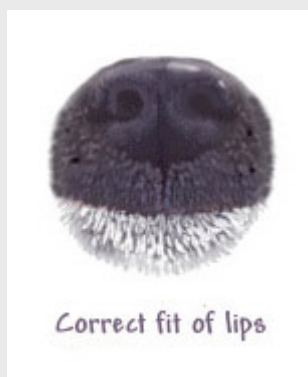
BISS Ch Sea Haven Chasing Moonbeams, ROM, CC, AOM
X BISS Ch. Lacewood Bi Starlight

Fit of Lips

By Dana Quinney
Taken from Dana's website
from her Breeder's Notebook
<http://www.kennelcity.com/cdnote.html>

On this page of the Breeder's Notebook, I offer a look at the fit of Sheltie lips, including some of the common faults. The views are these: The first view is from the absolute front, not looking slightly down on the muzzle and under jaw as we tend to do, since we are much taller than a Sheltie. The side view is drawn as if the viewer's eye were at the lip line. Again this differs from our usual perception angle, and makes the under jaw look deeper than it usually does to us from our superior height. Remember, some variation in the proportions of nose size to muzzle size is perfectly all right with the AKC Sheltie Standard; so is some variation in depth, finish and rounding of under jaw. I have drawn what I consider to be a middle-of-the-road muzzle and under jaw on which to demonstrate these lip faults. Please note that this page deals only with LIP FAULTS, not with faults of the muzzle and under jaw themselves.

The Sheltie standard states that the lips **MUST fit tightly together all the way around**. Therefore, any gaps or flops are not correct Sheltie type. Faults of only the lips themselves are not huge **oh my gosh I have to neuter this dog** faults, please! But they are faults against type, nevertheless. Our breed's engineers knew what they were about when they specified this **MUST** in the standard. Remember, our breed standard has few **MUSTS**, and this is one of them! A Sheltie with these lip faults, especially if they are exaggerated, does not exhibit true Sheltie type. We are lucky that our breed standard describes very functional, tight-fitting lips like those of wild canids. As a rule, Shelties do not have problems with cracking, rips, and tears in pendulous lips, and with infections in lip folds and muzzle-lip wrinkles. This is good! **Many (but not all) of the lip faults, of course, are caused by underlying problems with both the teeth and the skull**. I must give credit here again to the very patient and good-humored Merlin, who sat with me, with his muzzle held in position for several sittings so I could have a model on which to base the drawings. (Poor fellow, sometimes these poses were uncomfortable, especially the ones where his lower lip was pulled down.) I chose a bi-black so that shadings and/or merlings would not camouflage anything I wished to illustrate (and besides, Merlin is used to being my model). I have deliberately "purple-highlighted" these illustrations, since you cannot show much using black on black.



Fit of Lips

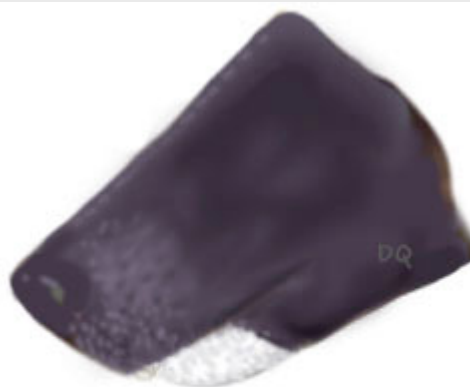
By Dana Quinney
Taken from Dana's website
from her Breeder's Notebook

<http://www.kennelcity.com/cdnote.html>

Here above is the correct lip fit: tight all the way around, no sags, no teeth or gums visible, no holes, no pockets. A Sheltie with correct lip fit will show very little if any of the hairless, rubbery lip skin when his mouth is closed. This means that the lip skin will stay moist and tight, sealing off the mouth neatly. This is good; exposed lip skin may get very dry, crack, and bleed, or may sunburn and blister.



Incorrect fit of lips;
overshot, or else too-short upper lips



Incorrect lip line
overshot bite
underlip does not
meet upper lip in front
underjaw too short



Undershot
Incorrect fit of lips
Correct muzzle



Incorrect lip line
undershot bite
underlip does not
meet upper lip in front
underjaw too long

Fit of Lips

By Dana Quinney
Taken from Dana's website
from her Breeder's Notebook

<http://www.kennelcity.com/cdnote.html>

Above we see incorrect lip fit caused by two bite problems, overshot (left) and undershot. Note that the teeth are visible in both cases. A dog unable to close his mouth because of poor tooth alignment may drool, and will certainly lose more moisture through his mouth than a dog able to close his lips. In the West where humidity is low, dogs like these and like the two examples below, drink more water to keep themselves hydrated.



Above are illustrations of lips failing to meet because the skull and lower jaws have alignment problems. The front-on illustration shows an exaggerated example, and the side view shows a less problematic example. By skull-lower jaw alignment problems, I mean that either the skull is too narrow for the jawbones, or the jawbones are too wide for the skull (whichever this is, the results are the same and the effects are indistinguishable; it's like saying, "These pants are too small for me." Or, "I am too large for these pants." Both are true, but which one best describes the problem, depends upon the point of view! (I know which I prefer!) When there is a poor fit between skull and jawbones, the molars and premolars, top and bottom, interfere with one another. The lower molars are supposed to fit just inside the upper molars, with the slightest possible "kiss" or even a tiny gap between the two sets. This makes for good tight fit between the skull and jawbones and good tearing power for the molars and premolars. If the skull-jawbone fit is poor, the lines of back teeth meet, making it impossible for the dog to close his mouth, and thus his lips stay open. This makes the dog look like he has a deeper under jaw than he really has, because it cannot tuck up neatly where it is supposed to fit.

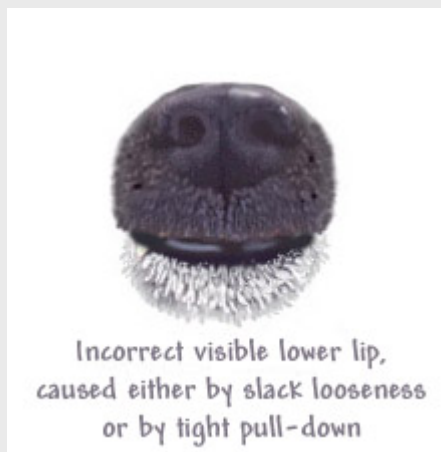
Fit of Lips

By Dana Quinney
Taken from Dana's website
from her Breeder's Notebook

<http://www.kennelcity.com/cdnote.html>



Shown above, "Collie mouth" is a condition in which the centers of the two lower jawbones drop forward in a point right where the two halves meet. This is a weak condition, and causes the lower incisors to drop forward (and in rare cases where the skull is involved, too, involves the upper incisors), making it impossible for the lips to meet. This condition usually worsens with age, and drooling results. From the side, Collie mouth looks much like the side view of the muzzle in the illustrations below.



Fit of Lips

By Dana Quinney
Taken from Dana's website
from her Breeder's Notebook

<http://www.kennelcity.com/cdnote.html>



Incorrect lower lip,
caused either by slack looseness
or by tight pull-down

Shown above left is visible lower lip, a rather common fault. The lower lip, for some reason, may be tightly pulled down away from where it should meet the upper lips in a tight seal. A less common cause of this problem is loose-fitting, or slack lower lip, where the lip is not tight and falls loosely away from the gum. If the lower lip is pulled down or is loosely falling down, you will see the lower lip when you look at the muzzle front-on; it will not be hidden. The center illustration shows the side view of this fault, which is nearly invisible from ringside. The illustration on the right shows a more severe expression of this problem, where the lower lip is down so far that the lower gums and bases of the lower incisors are visible. In its less serious forms, down lower lip is not much of a problem. In more severe cases, the lower lip may crack and bleed (if the dog is living in an area with little humidity), or the dog may drool.



Flews
Incorrect fit of lips

Flews? What are flews? Flews, commonly seen on many sporting dogs and scent hounds, are pendulous lips that hang down and "wave in the breeze." Sheltie puppies often go through a stage where they have a little bit of flews with the sides of the upper lips, but usually grow out of it. However, sometimes flews persist into adulthood. They most often appear as little extensions of the upper lips on the side of the muzzle near the front, hanging down a bit on the sides to more than overlap the rubbery, skinless area of the lip seal. If not exaggerated, they are not a real problem, and sometimes may

Fit of Lips

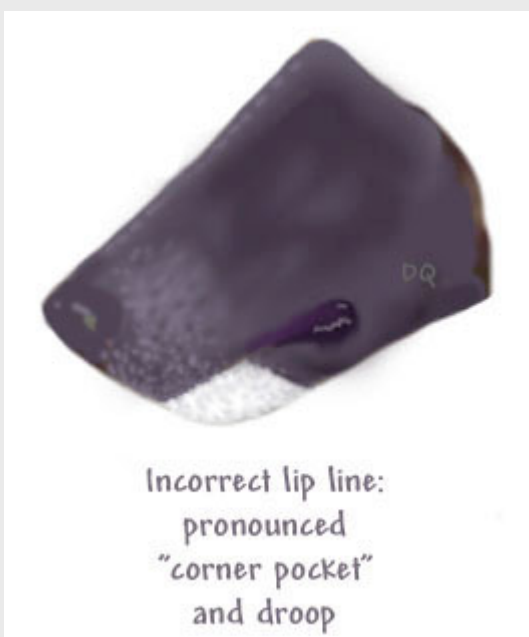
By Dana Quinney
Taken from Dana's website from her
Breeder's Notebook

<http://www.kennelcity.com/cdnote.html>

be seen to add a little softness to the look of the muzzle. However, flews are absolutely un-typical of our breed, so should be faulted when present. I have not illustrated flews from the side; they are nearly invisible unless the mouth is opened, but in some cases may make the lip line look like it is swinging up in a "smile" in the direction of the eyes. Flews make the under jaw seem shallower than it really is.



Above is a minor fault of the upper lips, which I call "whistle-hole." Here the upper lips fail to meet in the center, leaving a little "blow hole." I once knew an obedience Sheltie with whistle-hole upper lips, and when he had completed an exercise, if it wasn't hot enough for him to pant, he would breathe hard through his closed lips and whistle! This is a minor fault, but it wouldn't be a good idea to double up on it too strongly.



Fit of Lips

By Dana Quinney
Taken from Dana's website
from her Breeder's Notebook

<http://www.kennelcity.com/cdnote.html>

Finally, here is a fault that is becoming more and more common, and is not true to the type of our breed. This is loose lips, where the corners of the lips actually form a visible "pocket" of loose lip skin. You see this "corner pocket," very exaggerated, in Bulldogs, Mastiffs, Bloodhounds, and many sporting dogs. This is not a sheep-dog thing! The lip skin has some soft serrations or scallops of skin in the lips near the place where upper lips and lower lips come together. In the Sheltie, these little nubbins should be HIDDEN, not out flapping in the breeze where they can be torn, or more likely, can dry, crack, and bleed.

Most lip-fit faults are minor faults of type, and should be regarded with perspective -- as should all faults. These are not, for the most part, faults that will affect the overall Sheltie, nor will they have much effect upon a Sheltie's ability to perform, to live a long life, or to be an excellent companion. However, they are faults, and should be noted and weighed when planning breedings.

I haven't included every problem of lip fit, but Merlin says, "That's enough for now!"



I Have a Question



This Month's Question: I want to make a dog area at my house. I am going to build an indoor room for the dogs to sleep in at night with a dog yard off of it so that I can let them out into the dog yard. I would love advice on what options I should look at. What surface do you recommend for the dog yard? Do you recommend crates for sleeping in my dog room or pens? What kind of fencing is best—Chain Link, wood, vinyl? Any information you could give me that would help me make my dog area the best would be very much appreciated. If you have suggestions about things I have not even thought of yet, please include those as well. Thank you

I saw a large kennel in CA that had a patio area off the side of her indoor room where her dogs were all in crates at night. The patio was tiled so after they ate out there she could wash it down easily and quickly with a hose. Otherwise they had 2 1/2 acres to run in during the day. The 2 1/2 acres was fenced with sheep fencing. She had 39 dogs when we were out there. By 5:30 they were all in crates. —Helene Pockrus

Substrate and fences:

To me, substrate is a "how many dogs" question. If you have three or fewer dogs and only the occasional litter, grass is best! You will have to repair some urine-burned spots and some paths and some digs (or make hardened paths), but they love it, it keeps them clean, and it's good for them to run on.

More dogs? Well, I have tried just about everything, and I haven't found the ideal yet! Cedar shavings is what I have settled on. I love them because they are fluffy and scented, so it takes quite a bit of pee and poop to make them stinky. If changed regularly and if they don't get too wet, they keep the dogs clean and smelling nice. Poop picks up easily, and if you don't get to it within a few minutes, the shavings cover the outside of the poop and keep it from getting on the dogs, and the little "poop packet" picks up easily. I usually replace the shavings instead of leaving them in place and disinfecting them. When the old shavings are removed from a run, I Clorox the run before putting in the new shavings.

The downside of shavings is that they escape from fencing. If you are using chain link, the dogs will run around and fling the shavings through the fence, and it never looks nice just outside the fence unless you line the run with 24" deep boards or something. I have tried this, too, and find it too hard to keep the liner in place. Another downside is that when they get wet, shavings get gorp and stinky, and you will have to replace the whole lot about once a week (which is what I do in the winter). Currently, I have cedar shavings in covered runs, and that sounds ideal -- except that the wind often sends horizontal rain and snow into the runs anyway! A final downside of shavings is that shavings aren't good for building "running muscles," so the dogs need to have somewhere else with a more solid substrate where they can go to stretch out and run.

I've tried gravel and crushed rock. Some people swear by rocks or gravel, but I don't like them. Puppies chew on rocks and occasionally will swallow one, so personally I wouldn't have a gravel or rock run for puppies. Also, poop sticks to rocks if a dog steps in it and mashes it down. This makes the



I Have a Question cont....



poop bags VERY heavy! And it means you will have to rake the gravel away from the edges of the fence periodically because the larger rocks tend to get flung to the edges of the fence (or through the fence), leaving tiny stuff or dirt in the center. Crushed rock is better than gravel for staying in place. On the up side, gravel and rock drain well unless they were really wet when it froze for the winter. Gravel and rock are easy to disinfect, and if compacted, are a great surface for dogs to run on. Currently I have a big runabout yard with a gravel substrate.

The best substrate I have ever used is coarse sand, which I had in Arizona. It drains beautifully, and in that climate, was easy to maintain. It's easy to disinfect. But like shavings, it creeps outside the runs. And sand wouldn't be much good in the winter, because as soon as it's hard freeze time, it doesn't drain.

Fences? If you are where you don't want the number of dogs to be visible, wood and vinyl are the choices. I have never used vinyl, so I don't know how it would rate. My dogs chew wood fences. My solution in the past has been wood fencing with an inner fence of chain link, so the dogs can't get to the wood. Right now, with temporary chain link pens, I have put the roll-out willow twig fencing on the outside of the chain link, and that's working pretty well for me. It keeps MOST of the cedar shavings inside, too.

If someone else has better ideas, I would love to hear them! — Dana Quinney

I like chain link outside and then either buried about 4 to 6 inches or the fence panels with the pipe all around. bury the pipe. the pipe will give support to the enclosure and hold the fence tight to the bottom. Most dogs, and shelties are not alone in this, will dig and or climb when bored. The ground around the outdoor run can be just about anything the will drain, we like 3/4 minus washed gravel, this works well on their pads and drains well. If I could afford concert then that would be my first choose, (easy to clean, doesn't hold odor). Don't forget the shade top for the run, not solid but like a screen cloth. In hot areas, like ours, I use a real fine mister that is set up to spray about every twenty minutes for about one minute. lowers the temperature, also helps to keep the coat moist not wet.

In the house I like either tile with a rug or if garage then concert floor. This will make those accidents that just happen :-) easier to cleanup. I do not like "doggie doors" because I want to know when the dog is in or out, and which dog/cat/skunk is in. I use crates for of the dogs to sleep in, this serves several purposes, it keeps the dog where I want him, It keeps any accidents contained to one area, It provides a safety area for the dog, kinda like hiding under the blankets when a child. In the cast of a fire or other emergency the responders can go to one area to rescue your animals. I have one dog that has the run of the house, but more times than not I find him sleeping in his crate in the morning.

Hope this helps, — Doug Sorensen, Sequoya Shelties

Next Month's Question:

What brand of dog food do you feed and what ingredients do you look for or stay away from?

(Please submit answers to Tricia at lacewoodshelties@comcast.net)

If you have a question for this column that you would like to receive an answer for, you can submit the question anonymously to Tricia at lacewoodshelties@comcast.net or mail to Tricia Harris 2082 Mountain Vista Lane, Provo, UT 84606

Club Meetings

**Our Club meeting for January will be Wednesday January 21st,
at 7:00 PM at Sandy Bicentennial Park,
in the building in front the pavilion.**

The Park is located at 8680 South 500 East.

**The board will meet at the same location on the same night at
5:45 PM**

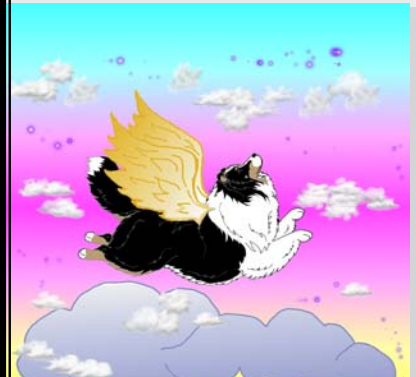
*** If you know of someone in the club who is in the hospital, ill, or of a death in the club or in the sheltie world, please let Diana Beebe know so that she can send a card.
dlbeebe@worldwidesoftware.net or call her at 801-375-3861

Get well wishes for

- Jim Newman
- Richard Wilkinson

Condolences to:

- Cindy Wilkinson for the loss of Shimmer
- Shannalee Michalsky for the loss of Hailey



Snickerpoodles

- 1/2 cup vegetable oil
- 1/2 cup shortening
- 1 cup honey
- 2 eggs
- 3 ¾ cups white flour
- 2 teaspoons cream of tartar
- 1 teaspoon baking soda
- ½ cup cornmeal
- 2 teaspoons cinnamon

Mix vegetable oil, shortening, honey with eggs. Beat well. Add flour, soda and cream of tartar. Knead dough until mixed well. Shape dough by rounded teaspoons into balls. Mix the cornmeal and cinnamon together in a bowl and roll balls in mixture. Place 2 inches apart on a greased cookie sheet. Press the balls down with a fork. Bake for 8-10 minutes at 400F. Cool on a rack. Store in airtight container/



***** Shannalee is in need of more members to volunteer to fill in this questionnaire. Please fill it out and send it in to her!!!!**

Dear Club Members——

I am doing club member interviews in the form of a few simple questions. I have started sending them out via email to some members but have had little response. If you all would take the time to just answer the questions and email them or mail them to me, I would really appreciate it. **WE WANT TO GET TO KNOW YOU!**

Please fill out the following questionnaire about yourself. If the question does not apply to you, please just go on to the next one.

Thank you

Getting to know our Members:

- 1) State your full name(s):
- 2) Kennel name and how you came up with it:
- 3) How did you first become interested in shelties?
- 4) Who was your first sheltie and what color was he/she?
- 5) Do you breed shelties? What lines do you breed?
- 6) Who was/is your mentor, Who do we thank for getting you started?
- 7) How many dogs do you have? What titles do your dogs have?
- 8) Who is your favorite dog (that you own)?
- 9) Who is your favorite dog not owned by you (living or passed)?
- 10) Who do you admire?
- 11) What is your favorite part of showing dogs?
- 12) What has been your favorite or most memorable win?
- 13) Is there a dog that you own now that your are particularly excited about?
- 14) What goals have you set for yourself in purebred dogs?
- 15) Any words of advice for newcomers?

After filling this out, please email it to Shannalee Michalsky, akadia@srv.net or akadia2shonga@yahoo.com.

You may include three (3) photos of your choice to include with your interview.

****Golden Spike Dog Obedience Club Show Notice!!**

The Matthew Foundation (f.k.a. Heart Ministries, Inc.) has recently accepted the responsibility of being the Golden Spike Dog Obedience Club (GSDOC) Show Secretary for the March 2009 Obedience/Rally Trial.

While putting together the GSDOC Premium List for the show, we have found that a lot of the information we received is either incomplete or not current. Therefore, if your club's members would like to be included in the new premium list, please send us a (current) list of their names/addresses/email information or have them contact us directly.

We would also like to invite any of your members who have never been on this mailing list to join, or, if someone would like their name removed from the list – please let us know and we will take care of that as well.

As a consideration to your members and GSDOC, we'd like to keep all printing and mailing costs to a minimum, and are attaching a copy of the show premium to this email. We are also requesting that you please direct all communication via email to: DogShowSec@gmail.com.

Thank you!



USSA Specialty Photos



Obedience Trophy Table



Conformation Trophy Table



WB — Lacewood Bi Starlight



WD, BOW — Kensil's Irish Cream



Best Jr Ashlie Whitmore



BOB — Ch PaRay Cirque Du Soliel

USSA Specialty Photos



WB, BOW — Lacewood Bi Starlight



RWB — Windabrae Time Remembered



WD — Primo Black Forest



BOB — Lacewood Bi Starlight



High In Trial

Calendar of Events

January 21, 2009 — Club Meeting

February 18, 2009 — Club Meeting

March 18, 2009 — Club Meeting

April 15, 2009 — Club Meeting

April 18-29, 2009 — Sheltie National, Perry, GA

April 29, 2009 — USSA Specialty Show

April 30-May 3 — Utah Cluster

May 16, 17 — Mount Ogden Kennel Club Show

May 20, 2009 — Club Meeting

